

Creating a *Microsoft Azure-hosted Database*

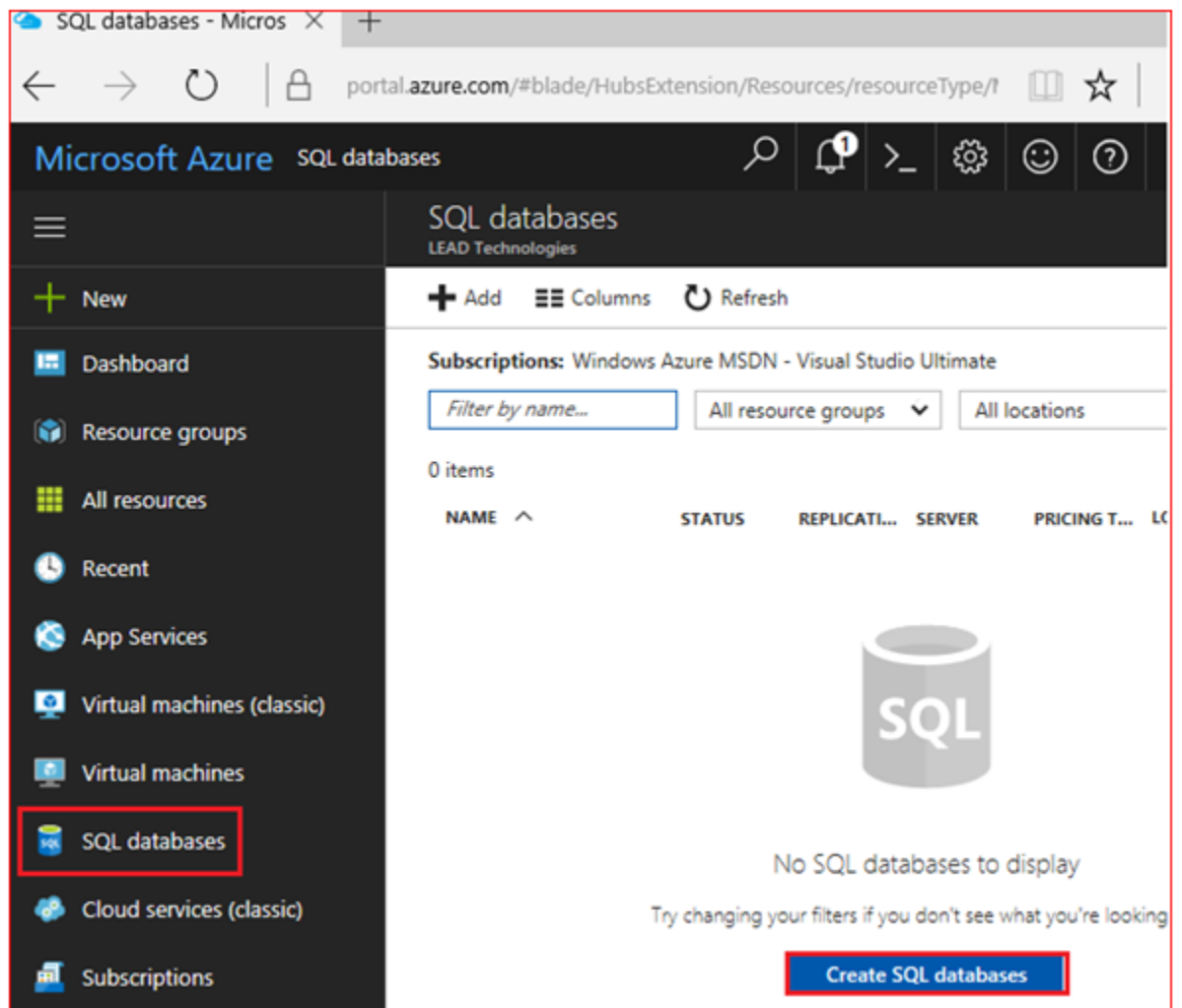
The steps below show to how create any of the PACS databases on *Microsoft Azure*.

Step 1:

If you already have an SQL server hosted on *Microsoft Azure* and you know the connection string, skip to *Step 2*.

Otherwise, continue with *Step 1* to create an SQL server hosted on *Microsoft Azure*.

- Login to the Azure Portal
- Click *SQL databases*
- Click *Create SQL databases*



- Fill in the following fields

Microsoft Azure SQL databases > SQL Database > Server > New server

SQL Database

+ New

Dashboard

Resource groups

All resources

Recent

App Services

Virtual machines (classic)

Virtual machines

SQL databases

Cloud services (classic)

Subscriptions

App Service plans

Azure Active Directory

* Database name
MyEmptyDatabase ✓

* Subscription
Windows Azure MSDN - Visual Studio Ultin ▾

* Resource group ⓘ
 Create new Use existing
Default-Storage-EastUS ▾

* Select source ⓘ
Blank database ▾

* Server
Configure required settings >

Want to use SQL elastic pool? ⓘ
 Yes Not now

* Pricing tier ⓘ
Configure required settings 🔒

* Collation ⓘ
SQL_Latin1_General_CP1_CI_AS

- Click on: *Server Configure required settings*

The screenshot shows the Microsoft Azure portal interface for configuring a new SQL Database server. The breadcrumb navigation at the top reads: Microsoft Azure > SQL databases > SQL Database > Server > New server. The left-hand navigation pane includes options like New, Dashboard, Resource groups, All resources, Recent, App Services, Virtual machines (classic), Virtual machines, SQL databases, Cloud services (classic), Subscriptions, App Service plans, and Azure Active Directory. The main configuration area on the right contains the following fields:

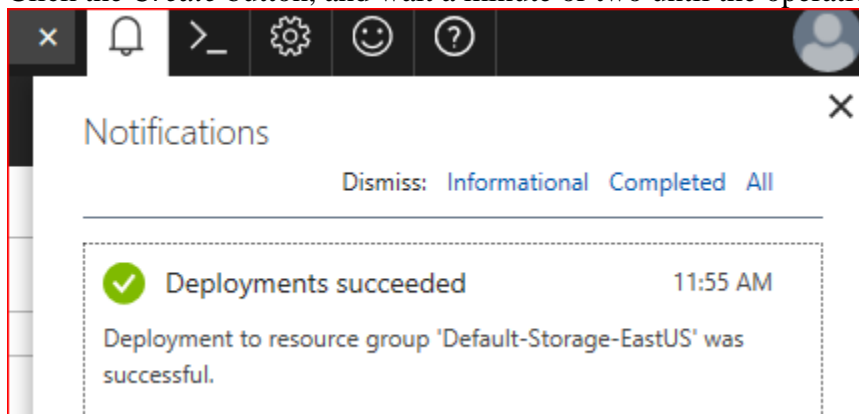
- * Database name:** MyEmptyDatabase (with a green checkmark)
- * Subscription:** Windows Azure MSDN - Visual Studio Ultin (dropdown)
- * Resource group:** Create new Use existing; Default-Storage-EastUS (dropdown)
- * Select source:** Blank database (dropdown)
- * Server:** *Configure required settings* (highlighted in yellow with a right-pointing arrow)
- Want to use SQL elastic pool?:** Yes Not now
- * Pricing tier:** *Configure required settings* (with a lock icon)
- * Collation:** SQL_Latin1_General_CP1_CI_AS

- If no servers are found, click *Create a new server*
- Fill in the *New server* settings similar to below, and click *Select*

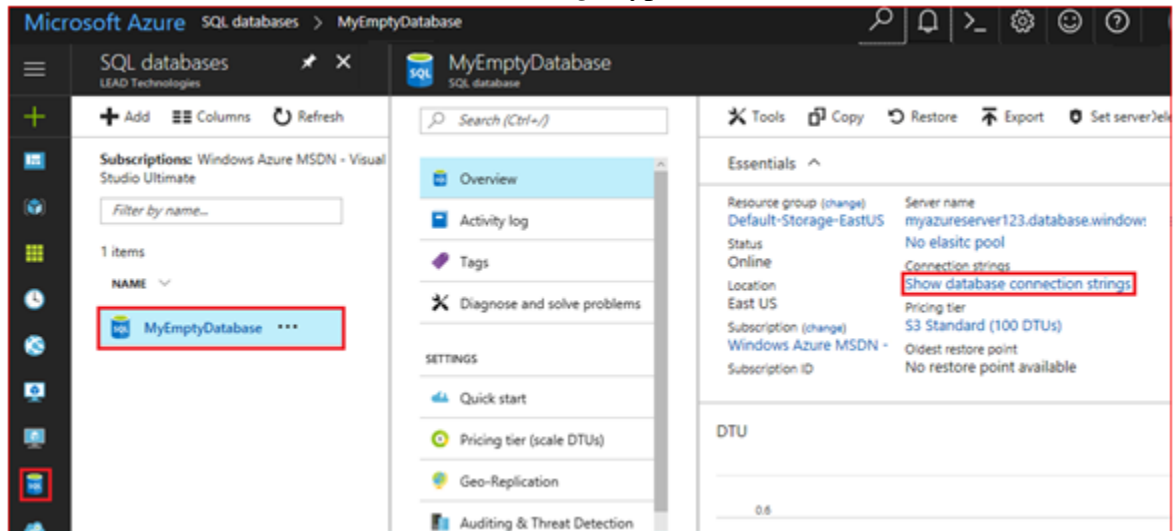
The screenshot displays the Azure portal interface for creating a new server. It is divided into three main sections:

- SQL Database:** Contains fields for Database name (MyEmptyDatabase), Subscription (Windows Azure MSDN - Visual Studio In), Resource group (Default-Storage-EastUS), Select source (Blank database), Server (Configure required settings), Want to use SQL elastic pool? (Not now), Pricing tier (Configure required settings), and Collation (SQL_Latin1_General_CP1_CI_AS).
- Server:** Shows a '+ Create a new server' button and the message 'No servers found'.
- New server:** Contains fields for Server name (myazureserver123), Server admin login (MyAdminLogin), Password, Confirm password, Location (East US), and a checked box for 'Allow azure services to access server'. A 'Select' button is highlighted at the bottom right.

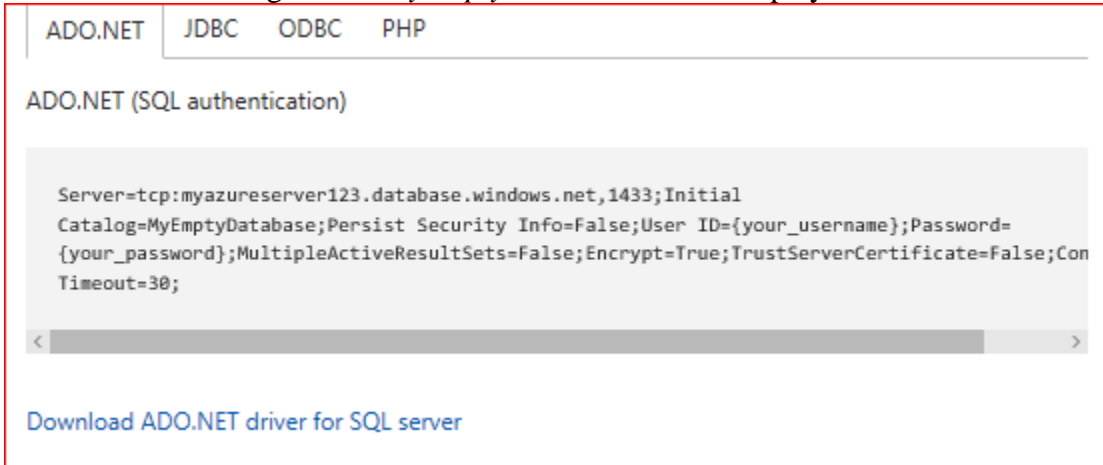
- Click the *Create* button, and wait a minute or two until the operation completes.



- Click on *SQL Databases*, and you should see that the database has been created
- Click on the *MyEmptyDatabase* database
- Click on the *Show database connection strings* hyperlink



- The connection string for the *MyEmptyDatabase* will be displayed.



Step 2:

- Start the *CSPacsDatabaseConfig.exe* configuration tool
- Click the *Change...* button for the *LEAD Storage Server*

Database Configuration Application

This application is used to configure the PACS Framework databases.

If this is the first time that you have used this wizard, select "Create New Databases".

Create New Databases

If you have created the databases before and would like to configure the components to connect to an existing database, select the "Connect to Existing Databases" option.

Connect to Existing Databases

Default Configuration Settings

SQL Server:

Newly created databases overwrite older databases of the same name.

Databases

<input checked="" type="checkbox"/> LEAD Storage Server	<input checked="" type="checkbox"/> LEAD Storage Server	<input type="text" value="Change..."/>	Default:PC\SQLEXPRESS_2012
<input checked="" type="checkbox"/> Medical Workstation	<input checked="" type="checkbox"/> Medical Workstation	<input type="text" value="Change..."/>	Default:PC\SQLEXPRESS_2012
<input checked="" type="checkbox"/> DICOM Worklist Database	<input checked="" type="checkbox"/> DICOM Worklist Database	<input type="text" value="Change..."/>	Default:PC\SQLEXPRESS_2012

Enter a master user name and password to be used by demos that requires log-in information:

User Name:

Password:

Apply Configuration Options

- Enter the Azure SQL Server information (Server name, password) and click the OK button.

Connection Configuration

Create LEAD Storage Server Database

Enter information to connect to the selected data source or click "Change" to choose a different data source. If this is the first time you are running this wizard, use the default data source, and click the 'Browse...' button to choose a folder location to store the database file.

Data Source:

Microsoft SQL Server Change...

tcp.myazureserver123.database.windows.net,1433 Refresh

Log On to the server:

Use Windows Authentication

Use SQL Server Authentication

User name: MyAdminLogin

Password: [masked]

Sql Mirroring

Failover Partner: [empty]


Database:

LeadStorageServer19_32

OK Cancel

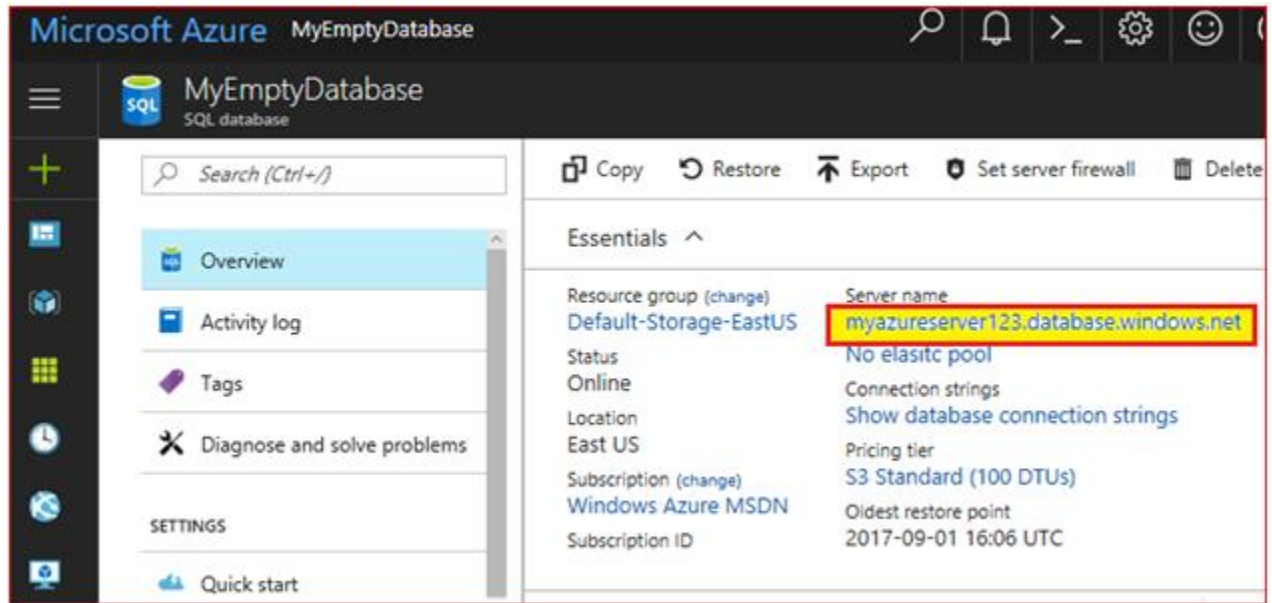
- If you see the following message, view the SQL Server in the *Azure Manager*.

Database Configuration Wizard

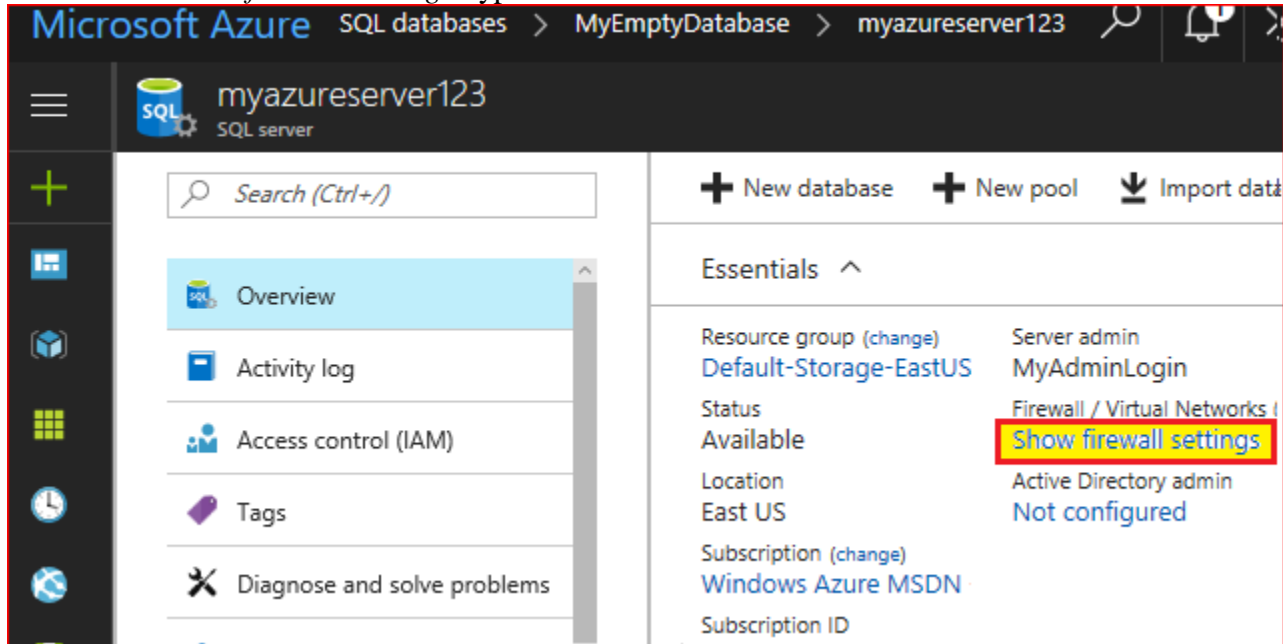
 Cannot open server 'myazureserver123' requested by the login. Client with IP address '64.128.73.222' is not allowed to access the server. To enable access, use the Windows Azure Management Portal or run sp_set_firewall_rule on the master database to create a firewall rule for this IP address or address range. It may take up to five minutes for this change to take effect.

OK

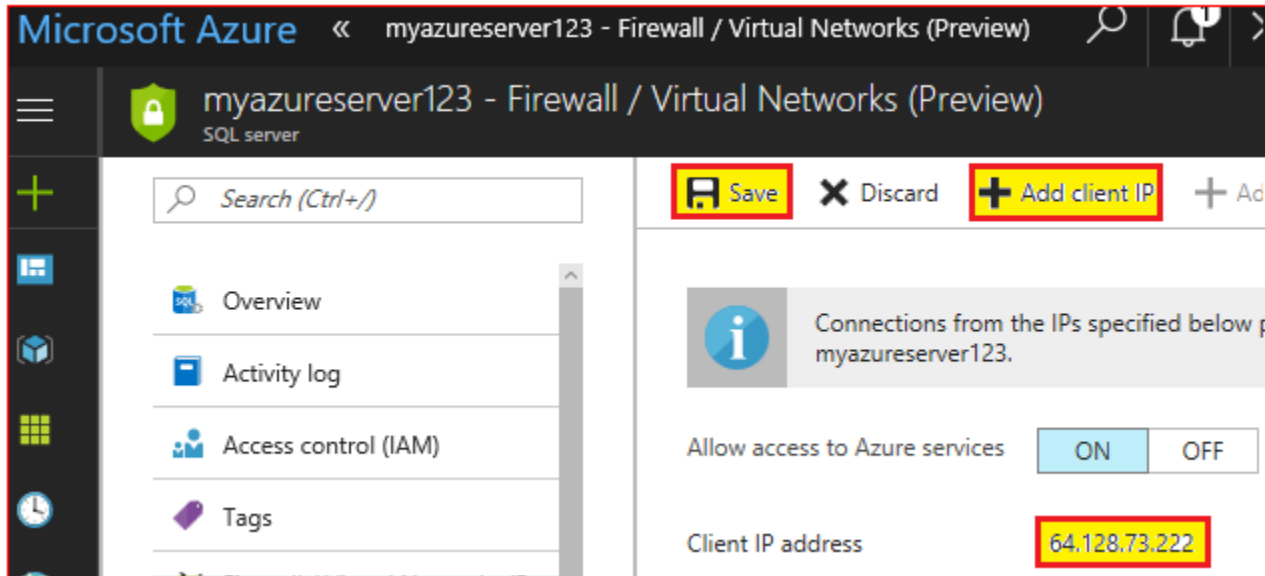
- Click on the *Server name* link



- Click on the *Show firewall settings* hyperlink.



- The IP address of the computer that is running the *CSPacsDatabaseConfig.exe* configuration tool will be displayed. Click the *Add client IP* button to allow this IP through the firewall.



- Return to the *CSSStorageServerManager.exe*, and again click the *OK* button to Create the LEAD Storage Server Database on the Azure hosted SQL Server.

Connection Configuration

Create LEAD Storage Server Database

Enter information to connect to the selected data source or click "Change" to choose a different data source. If this is the first time you are running this wizard, use the default data source, and click the 'Browse...' button to choose a folder location to store the database file.

Data Source:

Microsoft SQL Server Change...

tcp:myazureserver123.database.windows.net,1433 Refresh

Log On to the server:

Use Windows Authentication

Use SQL Server Authentication

User name: MyAdminLogin

Password: [REDACTED]

Sql Mirroring

Failover Partner: [REDACTED]

Database:

LeadStorageServer19_32

OK Cancel

Step 3:

- To create the *Medical Workstation* and *DICOM Worklist* databases on the Azure hosted SQL Server, click the corresponding change button, and fill in the *Azure* data source, *Azure* user name, and *Azure* password as was done in the previous step.

Database Configuration Application

This application is used to configure the PACS Framework databases.

If this is the first time that you have used this wizard, select "Create New Databases".

Create New Databases

If you have created the databases before and would like to configure the components to connect to an existing database, select the "Connect to Existing Databases" option.

Connect to Existing Databases

Default Configuration Settings

SQL Server:

Newly created databases overwrite older databases of the same name.

Databases

<input checked="" type="checkbox"/> LEAD Storage Server	<input type="button" value="Change..."/>	Changed: tcp:myazureserver123.database.wind
<input checked="" type="checkbox"/> Medical Workstation	<input type="button" value="Change..."/>	Default: -PC\SQLEXPRESS_2012
<input checked="" type="checkbox"/> DICOM Worklist Database	<input type="button" value="Change..."/>	Default: -PC\SQLEXPRESS_2012

Enter a master user name and password to be used by demos that requires log-in information:

User Name:

Password:

- Click the Apply Configuration Options to create the databases on the Azure hosted SQL Server.

Database Configuration Application

This application is used to configure the PACS Framework databases.

If this is the first time that you have used this wizard, select "Create New Databases".

Create New Databases

If you have created the databases before and would like to configure the components to connect to an existing database, select the "Connect to Existing Databases" option.

Connect to Existing Databases

Default Configuration Settings

SQL Server:

Newly created databases overwrite older databases of the same name.

Databases

<input checked="" type="checkbox"/> LEAD Storage Server	<input type="button" value="Change..."/>	Changed: tcp:myazureserver123.database.wind
<input checked="" type="checkbox"/> Medical Workstation	<input type="button" value="Change..."/>	Changed: tcp:myazureserver123.database.wind
<input checked="" type="checkbox"/> DICOM Worklist Database	<input type="button" value="Change..."/>	Changed: tcp:myazureserver123.database.wind

Enter a master user name and password to be used by demos that requires log-in information:

User Name:

Password: